

CASE STUDY

SD-WAN Solution for Orange Retail Finance



Orange Retail Finance Pvt Ltd (ORFIL) is a NBFC incorporated in 2000, providing vehicle and micro business loans to customers. It has 2000+ employees and 80+branches across 5 states in India .

Problem Statement / Challenge they faced

Orange Retail finance has both applications across cloud and central office accessed over MPLS to interconnect their branch offices. Most of the branches are tier-2/tier-3 towns having last mile quality and WAN management issues.

Applications used by Orange Retail Finance



Loan Processing
Applications



Web Access



Collaboration
(e-mail ,Voip)



Branch Operations
(CCTV,Bio,Hrms)

Solution Offered by COSGrid

COSGrid deployed **Reflex-InWAN** solution (**SD-WAN**) by installing COSGrid Reflex Edge in each of their branch offices and managed by COSGrid Guider. Gradually migrated away MPLS for all branches



Leveraged 4G and broadband for flexible connectivity

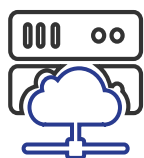


Security policies were applied centrally and in automated way



Zero Touch Deployment (ZTD) significantly reduced their deployment time.

COSGrid Reflex InWAN solution Features :



MPLS migration
to SD-WAN



Secure Branch
Internet Access



Centralised
Management



Enhanced App
Performance

COSGrid Reflex InWAN solution Overview :

COSGrid Reflex InWAN deliver a leap in the availability of higher bandwidth, quality, and secure network by leveraging the flexibility & pervasiveness of the Internet (including Broadband, 4G, Cable, VSAT, and Internet Leased Line)

- > QoS policies for business-critical traffic.
- > Link quality and business policy-based traffic steering
(between Internet links)
- > Adaptive Multi-path traffic aggregation
- > Authenticated and Encrypted traffic end-to-end
- > Network Acceleration for chatty apps.



COSGrid Reflex In-WAN Components :

COSGrid Reflex Edge



COSGrid Reflex-Edge is a virtual gateway deployed at the perimeter of a site/branch or on the cloud to act as an entrance for your WAN. COSGrid Reflex-Edge Gateway is a zero-touch deployment (ZTD) capable of self-configurable features that can do routing, forwarding, security, encryption, QoS, policy, and management.

COSGrid Guider



COSGrid Guider provides centralized organization wide installation, configuration and real-time monitoring in addition to orchestrating the data flow through the cloud network. COSGrid Guider enables one-click provisioning of virtual services in the branch, the cloud, or the enterprise data center or Cloud AZs. Intuitively intelligent COSGrid Guider App helps CXOs to enable their business users secure access to WANs or Corporate network for their respective roles and applications.

Why COSGrid Networks ?



Technological Innovations like Patented Multi-Path Traffic Aggregation , Mesh VPN , NetSecOps in a single dashboard.



Integrated Network Security & SD-WAN platform for remote branch offices, WFH users, IoT & cloud access.



Resilient and flexible WAN with customised workflow and support.



Industry-proven value proposition with solid customer retention for more than 6+ years



Cost effective products and solutions w.r.t Pain Points and Use cases



Durable and Robust Hardware

Customer Benefits :



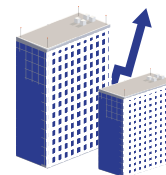
3X faster App
Performance



10X More
Bandwidth



50 % Lower
Opex



Roll out New
Branches 80 % faster

Customer Testimonial :

“ With COSGrid as our SD-WAN partner, we've been able to roll out new branches 80% faster, get 3x more bandwidth, and 50% lower Opex compared to MPLS WAN. A complete end-to-end solution from them with a solid 4G support, Network security, and simplified management ”.


**Mr Balaji, Chief Information Officer (CIO)
Orange Retail Finance India Pvt Ltd.**



 www.cosgrid.com

 info@cosgrid.com

 India , USA

 +91 90227 64534,
+91 86101 44212

An OEM Cybersecurity and Network Connectivity Product Company with a focus lies in Secure and reliable Connectivity (4G/ 5G SD-WAN, NG Router Firewall, SASE) along with a Holistic security approach (Advanced Threat Protection, Cloud Security, Zero Trust) and Network Visibility (User Experience Management (UEM) / Digital Experience Management (DEM)).